



**YOUR PARCEL,  
OUR MISSION**

*Your Global E-Commerce Logistics Partner*





# CONTENTS

About Us	01
Our Global Network	02
Our Presence in Europe	03
Our Strengths	04
Products and Services	05
Green Logistics Commitments	14



## Your Parcel, Our Mission.

*YunExpress Europe is committed to building an open, sharing and efficient e-commerce logistics ecosystem, by working closely with all the stakeholders and business partners together."*

## ABOUT US

Established in 2020, YunExpress Europe is a leading logistics provider in cross-border e-commerce. Our company works closely with local partners, running over 100 logistics routes daily, across 30 European countries.

Today, YunExpress Europe operates 21 subsidiaries with local experts. Our headquarters is located at Schiphol Airport in the Netherlands.

Benefitting from our strong connections with 20 key inbound gateways in Europe, including AMS, CDG, LGG, LHR, MAD and BUD. YunExpress Europe is well positioned to provide import and export services throughout our pan-European network.

And because we control our own linehauls and have well-established logistics network, YunExpress Europe excels in one-stop, end-to-end international shipping and delivery solutions.

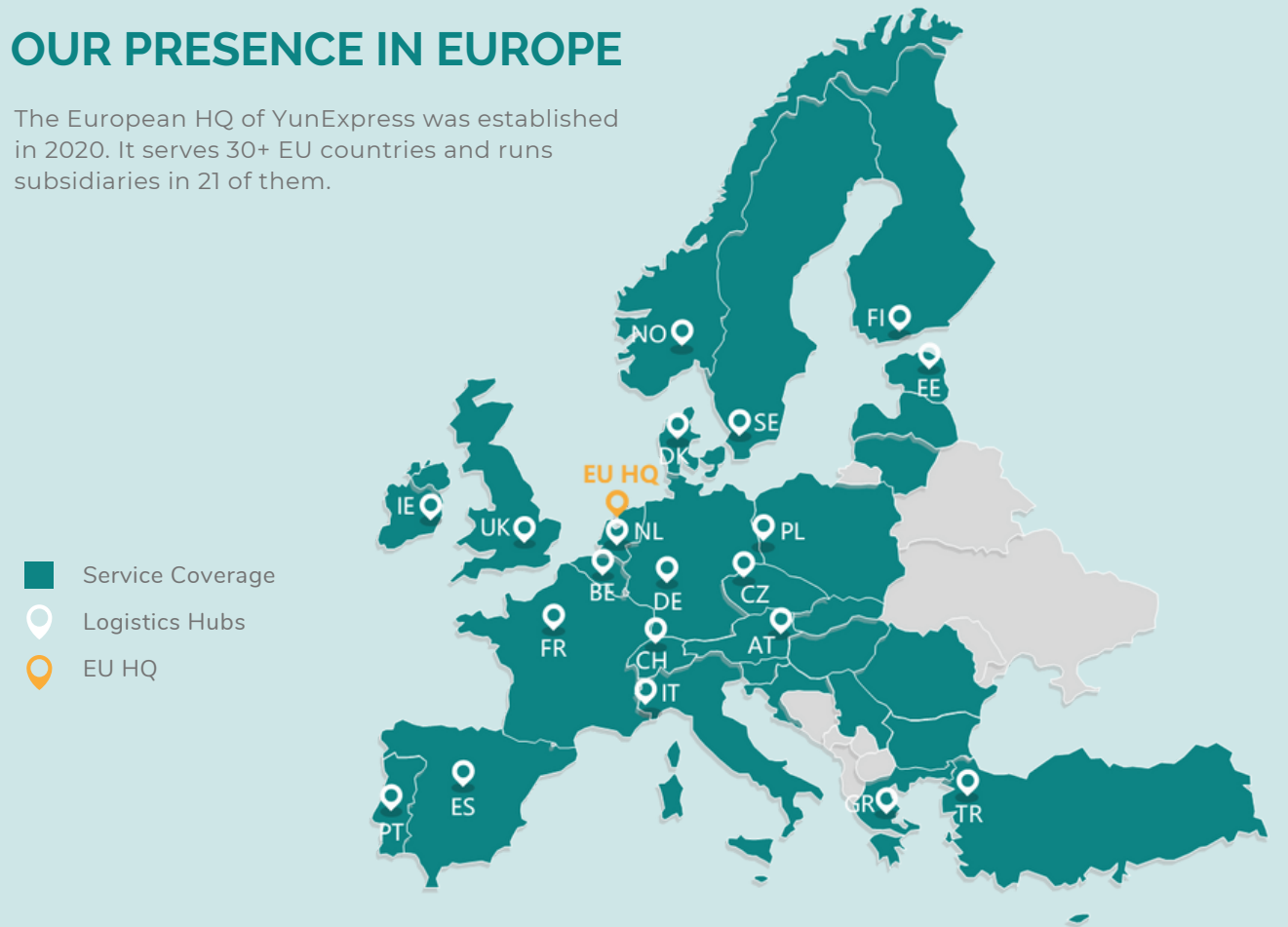
## OUR GLOBAL NETWORK

YunExpress has a global network, allowing it to deliver services to 220+ countries and regions worldwide.



## OUR PRESENCE IN EUROPE

The European HQ of YunExpress was established in 2020. It serves 30+ EU countries and runs subsidiaries in 21 of them.





## OUR STRENGTHS

Why YunExpress?



### Flexibility

We tailor our solutions to meet different clients' needs, from end-to-end solutions to modular services.



### Reliability

We collaborate with the top last-mile carriers in each of our destinations to ensure reliable and high-quality services.



### Cost-efficiency

Our cost-effective services deliver simple, convenient and practical solutions at competitive shipping rates.



### API Integration

We provide multiple options for submitting shipping data, and create customised labels on the online portal via API integration.



### Full Tracking

We provide full end-to-end tracking for every package with multiple milestones and delivery confirmation.

## PRODUCTS AND SERVICES

*YunExpress Europe offers a wide range of cross-border services to e-commerce B2C and B2B traffic.*

We specialise in one-stop, end-to-end international shipping and delivery solutions, including customs clearance.

From undeliverable returns to consumer returns, we also offer a range of additional scalable services to give clients extra peace of mind.

Our clients enjoy industry-leading processing, transit and delivery speed, with simple, convenient and practical solutions offered at competitive shipping rates.

We also guarantee a reliable service with full data and API integration, customised labels and end-to-end tracking options for every e-commerce parcel, recognised by most of the global and regional e-commerce platforms and web shops.



## **YEPP** (YunExpress E-commerce Parcel) Pan-European & International Shipping

We handle end-to-end e-commerce shipments with regular line-haul connections. Our extensive network seamlessly covers 30+ European countries. Whether you are looking for UK-EU shipping solutions with no customs hassles, or delivery alternatives to unlock remote European areas, we always have an answer for you.

As part of our global reach, we also connect clients to important markets such as China, APAC, and North and South America. We control every step of the cross-border transit process and ensure efficient, responsive and reliable shipping.

### **Competitive shipping rates**

Backed by our stable shipment volume and regular line-haul connections, we offer competitive transport costs.

### **Guaranteed efficiency**

Our clients benefit from transparent and scalable logistics solutions and expect on-time and exemplary export delivery to consumers.

### **Local know-how**

The logistics hubs are all run by our on-the-ground experts, leveraging reliable local know-how to secure efficient delivery.

### **Local trustworthy partners**

Thanks to our local resources and business partnerships, we provide market-specific solutions that are high in quality and low in price.



### **YEPP Light**

- 0-2 kg
- Mail service
- Destinations: FR/NL/PT/DE/IT/ES

### **YEPP Standard**

- Standard 0-5 kg
- 25 European destinations

### **YEPP Signature**

- Standard 0-5 kg
- 25 European destinations
- E2E (End-to-end) service with POD (Proof of Delivery)

### **YEPP International**

- 0-15 lbs
- Intercontinental service
- EU-US







## **YEPP** (YunExpress E-commerce Parcel) Returns Solutions

We offer undeliverable and consumer returns to ensure clients can troubleshoot unexpected disruptions and avert negative customer feedback.

Our clients' customers can return their parcels locally with no questions asked, and the returned parcels will then be transported directly to the nearest of our 21 logistics hubs. Our local teams will carry out a quality inspection and handle the resending of your item to ensure a convenient and smooth process.

### *All-in-one returns management*

We specialise in a wide range of returns handling, including reclamation, repackaging, relabelling, restocking and reassignment.

### *Optimal lead time and competitive rates*

We excel at cross-border returns supported by robust local carrier networks and self-operated routes.

### *Responsive value-added returns services*

Clients can either destroy or redeliver items that need to be returned, and arrange for them to be collected or resent.

### *End-to-end traceability*

Our undeliverable and consumer returns services guarantee frictionless returns with end-to-end traceability.

### **YEPP Undeliverable Returns**

- Accessible throughout 30+ EU countries
- Undelivered parcels will be returned to our nearest local warehouses for collection
- Additional options available (incl. storage, parcel abandonment, relabelling and reassignment)

### **YEPP Consumer Returns**

- Standard 0-5 kg
- Accessible throughout 30+ EU countries
- Standard service including quality inspection, inbound check-in, shelving and storage for max. 21 days
- Additional options available on request (incl. storage exceeding 21 days, parcel abandonment, relabelling and reassignment)







## GATEWAY LOGISTICS

We can support clients in multiple gateways covering AMS, LGG, CDG, LHR, BUD and MAD, with end-to-end operations from cargo pick-up, customs clearance, PMC/ULD breaking-down, sorting, scanning, loading, and despatching to last-mile delivery.

Rely on our experts and resources to offload the burden of customs paperwork with no delays. We can customise our service depending on the size, value, nature and geographical markets of our clients' business.

### 20 EU inbound gateways incl. UK & Norway

We are well positioned to provide import and export services throughout our pan-European network.

### Guaranteed C.C. solutions

We offer reliable solutions complying with Delivered Duty Paid (DDP), Import One-Stop Shop (IOSS) and VAT on E-Commerce (VOEC) standards.

### Efficient ground handling

We ensure the entire handling process runs seamlessly, supported by our well-trained employees at airside bonded warehouses.

### Smooth and agile process

Access to our effective management of cross-docking, in- and outbound shipments and linehaul injection means our clients can expedite their shipping to any destination in Europe.



Lead time from Customs Clearance to delivery

\*All the lead times are based on the optimal express services. Please contact us for more customised solutions.





## EU LAND FREIGHT

We provide specialised, flexible cross-border cargo transport solutions. Clients benefit from the easy placement and tracking of orders through a dedicated customer interface, faster LTL solutions, 24/7 customer service, GPS tracking, timely POD and additional, customised solutions.

### *Tailored solutions*

We offer customised shipping and loading options – FTL (Full Truckload), LTL (Less than Truckload) or Van – based on the preferred delivery time and budget.

### *100+ linehauls daily*

We schedule more than 100 linehauls every day to consolidate shipments from 30+ European countries.

### *End-to-end visibility*

Powered by our full GPS tracking system, we ensure end-to-end visibility during transit.



## FBA SHIPMENT SERVICE

Our shipment service for Fulfilment by Amazon (FBA) now covers several European countries such as Germany, Spain, Italy and the Benelux region. Customised for Amazon sellers, we provide transport for FBA by using comprehensive line-haul network and logistics resources.

After customs clearance in Europe, we pick up the goods and transit them to our own logistics hubs. We then transport them to the Amazon order processing centres at the agreed time while meeting all of Amazon's shipping standards.



## GREEN LOGISTICS COMMITMENTS



*We will introduce an eco-friendly truck fleet on European routes to reduce carbon emissions.*



*We have partnerships with EV manufacturers to develop tailored zero-emission fleet solutions in Europe.*



*We have EV charging facilities in every self-built logistics hub.*



*Self-built warehouses are equipped with solar power to achieve self-sufficiency in electricity consumption.*

*Your Global E-Commerce Logistics Partner*

---



*Get in touch with YunExpress Europe  
to level up your business with cross-border logistics success*

## YunExpress Europe

Schiphol Boulevard 167,  
1118BG Schiphol,  
The Netherlands

[info.eu@yunexpress.com](mailto:info.eu@yunexpress.com)  
[www.yunexpresseu.com](http://www.yunexpresseu.com)

